

Measuring the success of 30 years of native revegetation efforts

South West Slopes Native Revegetation Audit and Evaluation Project



30 years of revegetation

Over the past 30 years Landcare and Government have worked in partnership to invest in native vegetation restoration across the South West Slopes (SWS) bioregion.

To date few studies have attempted to measure and determine the success of these efforts, particularly the cumulative benefits of long-term restoration efforts at a large scale.

Findings

There are patches in the landscape where vegetation cover has increased by **more than 30%** and many of the increases are a result of active vegetation projects implemented by landholders, Landcare and Local Land Services.



87% of sites, over **18,640 ha** had an average increase of **8%** vegetation cover from 1990-2014



Revegetation sites maintained cover during the 'Millennium Drought' from 2000 to 2010, compared with the surrounding landscape.



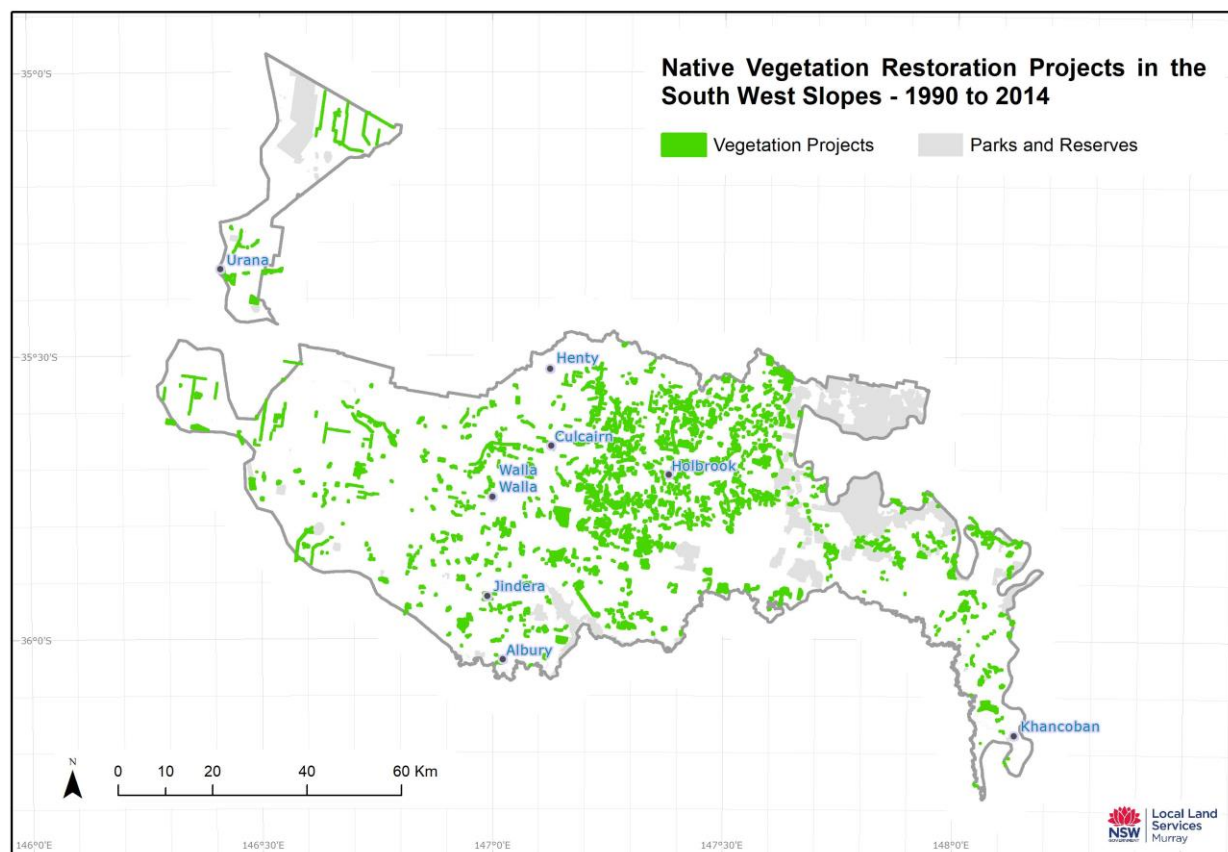
Methods

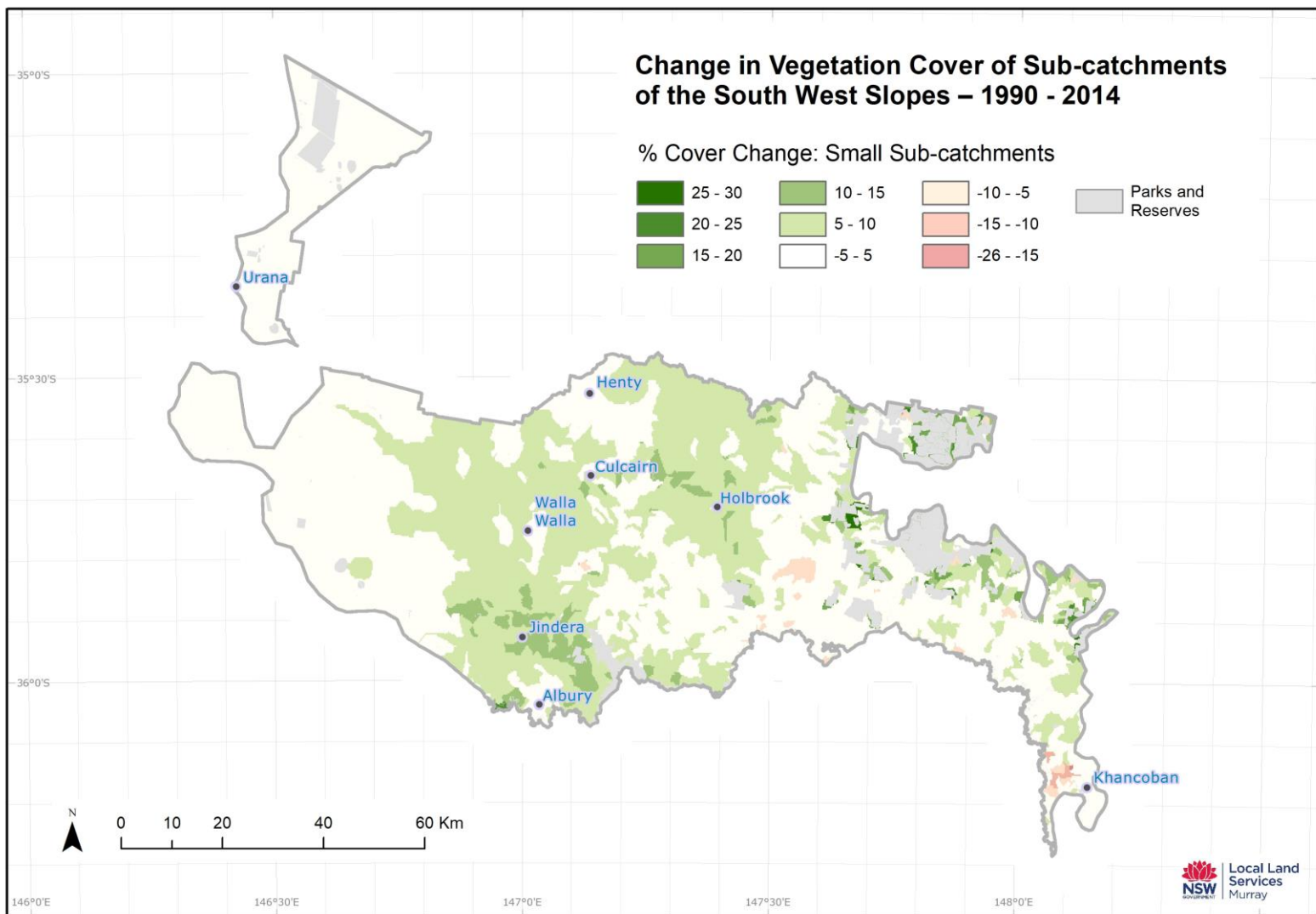
This study used satellite imagery to compare changes in vegetation cover across 2,746 restoration sites (23,634 ha) within the Murray Local Land Services (Murray LLS) area of the SWS bioregion from 1990 to 2014.

Changes were compared with a range of variables that we thought might influence restoration success to see if there were any patterns or trends that could be used to inform and help improve future restoration efforts.



Local Land Services





Take home messages

- Restoration efforts in the south west slopes of NSW have been very successful.
- Many of the plantings are less than 10 years old and are still growing.
- This will result in continued increases in vegetation cover over the next 30 years.
- There is a need for consistent data recording for revegetation works to allow for better comparisons of the success of different management techniques.



More information

For a copy of the full report from the study, or for more information, contact Murray Local Land Services in Albury.

www.murray.lls.nsw.gov.au

[Facebook.com/Murray.LLS](https://www.facebook.com/Murray.LLS)

[@MLLSEnviro](https://twitter.com/MLLSEnviro)



Local Land Services

