



THE GREAT 
EASTERN RANGES
connecting people...connecting nature

Slopes to Summit

A Great Eastern Ranges Initiative Regional
Partnership

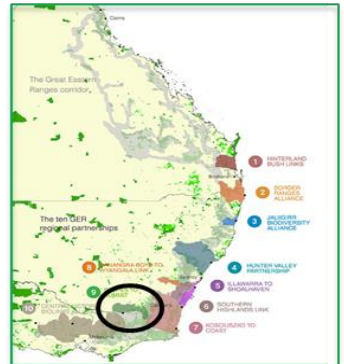
Investors Guide - Case Study

SLOPES2SUMMIT PARTNERSHIP

WHO ARE WE?

The Slopes2Summit Partnership is a collective of organisations that work on conservation in the eastern Murray region in southern NSW.

Our area extends from Kosciusko and the Alps to the southwest slopes of NSW



Supporting biodiversity actions across the catchment through NSW Catchment Action and the National Landcare program Managers S2S TSR project NSW Environmental Trust



Biodiversity Conservation Trust

Formerly the Nature Conservation Trust, managing the establishment of in-perpetuity Private Land Conservation in the S2S area through the NCT Revolving Fund and covenant program



Institute of Land and Water supporting research and monitoring activities linking research to practice



Parklands Albury Wodonga

Not for Profit organisation delivering social and environmental outcomes in the public land in Albury-Wodonga including nestboxes and community engagement



Office of Environment & Heritage

NSW Government delivering outcomes and supporting threatened species and communities in NSW



Albury Conservation Company

Not-for-Profit Company to protect and enhance the natural environment of Thurgoona NSW, and to raise community awareness of these values and engage locals in protecting biodiversity for future generations.



Landcare Network managing the S2S Bushlinks project & S2S BushConnect 2016-2022 on-ground projects doing revegetation and restoration on farms and hosting the local landcare coordinator for other landcare groups including Culcairn and Mountain Landcare

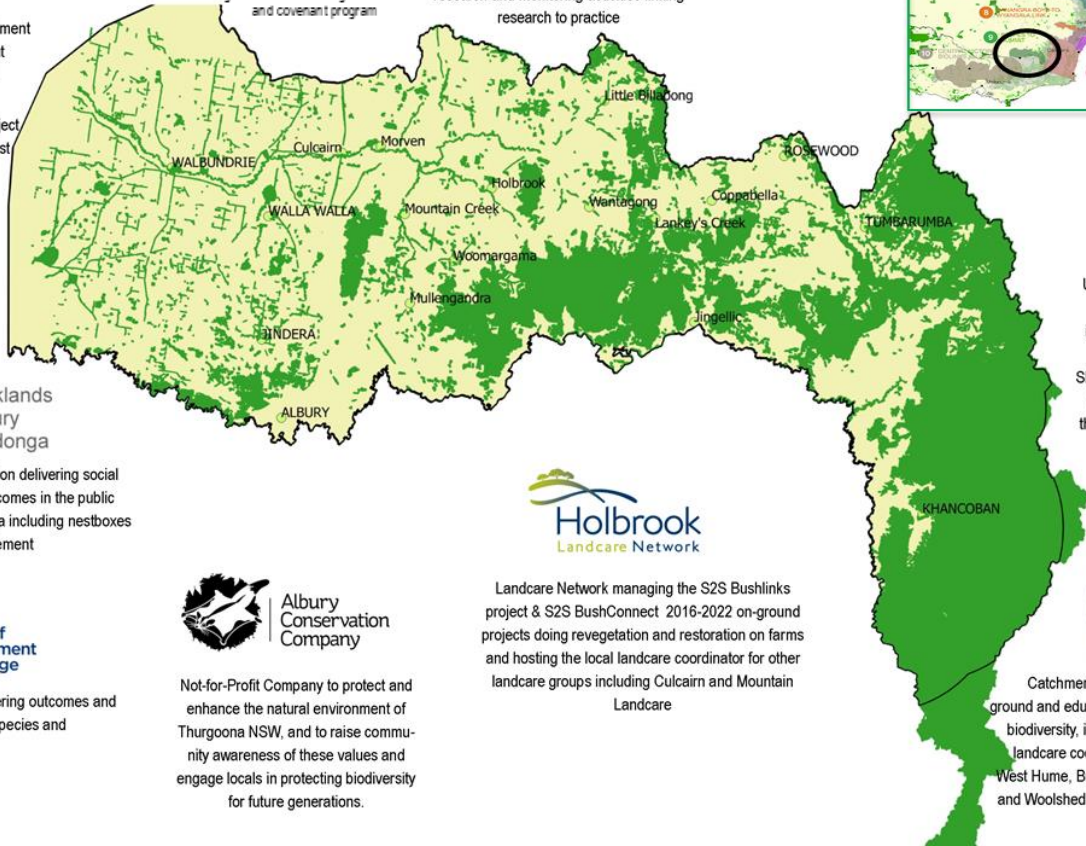


FENNER SCHOOL OF ENVIRONMENT & SOCIETY

Undertaking research and monitoring including maintaining the South West Slopes Study, a critical long term study in to the effects of changes in our landscape on fauna and flora



Catchment-wide delivery of on-ground and educational outcomes for biodiversity, including hosting local landcare coordinator looking after West Hume, Bungowannah/Splitters and Woolshed Thurgoona Landcare



How we work

People working together

Partners meet to bring their ideas, get advice and input, and forge partnerships and links in delivery



Connectivity Conservation

The “doing” - revegetation, restoration and remnant protection, community engagement, monitoring and research,



Applying knowledge

Linking Scientists with practitioners for evidence-based on-ground projects, advocating for connectivity conservation



What we have achieved?

The partnership was established in 2007 and since then at least \$3.5 Million dollars has been invested directly through S2S facilitated projects and partners with their own projects have invested at least another \$4 million in on-ground and capacity in conservation on farms and public lands in the S2S environment through various grants and programs.



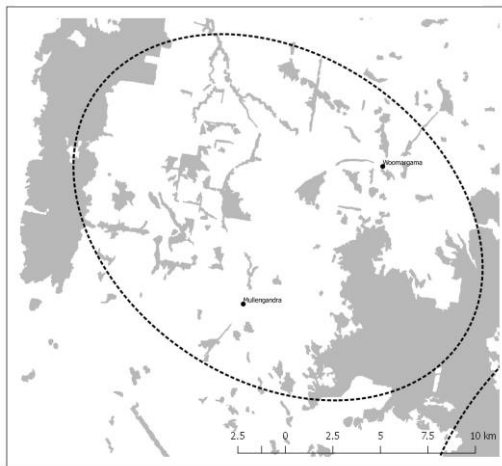
That's everything from awareness raising activities (S2S BioBlitzes, film & photo competitions) to establishing conservation covenants in key corridors and revegetation on farms and public land.

Landscape-scale change

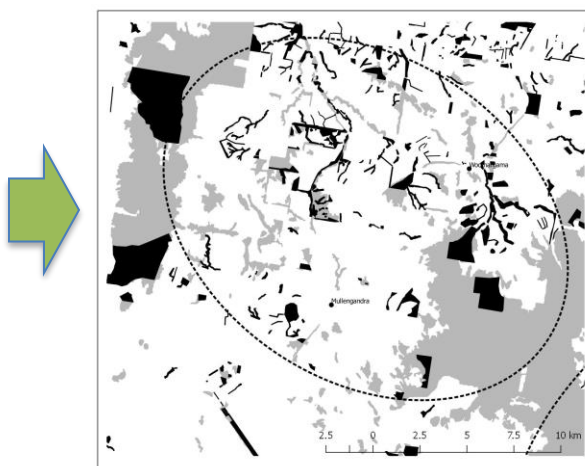
S2S has been involved directly in 400ha of in-perpetuity private land conservation, 650ha of revegetation, over 950ha of vegetation management for corridors for animals like squirrel gliders and threatened woodland birds since 2007.

One project does not a connected landscape make! The cumulative impact of the work being done by the partners over the past 30 years is beginning to come to fruition. This is the scale of change in just the Woomargama landscape...

Mapped baseline vegetation cover



Investment sites in black over the past 30 years in active management and revegetation



And for wildlife? Long term ecological monitoring by partner ANU is telling us that increasing vegetation cover on individual farms correlates with changes to bird numbers and species diversity and scales both the local and landscape scale. Work is continuing to make sure we understand the distribution and abundance of other key species



Why invest?

Slopes2Summit is a “collective” model – it is a sum of its partners.

Partners play to their strengths and take on the projects that they have the capacity and skills to deliver, and then support the S2S partnership through the capacity generated by those projects. We have organisations specializing in research & monitoring, and the on-ground delivery of revegetation and remnant vegetation management.



Supporting the unique wildlife ensuring their future options under climate change

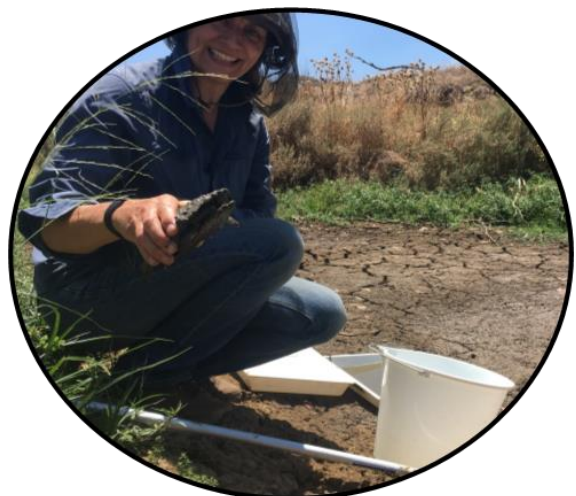
Improving resilience of wildlife habitats, farm productivity and sustainability



Supporting the local partnerships who work with the communities and land managers directly



Supporting the research and monitoring to direct work and tell if we are making a difference





The unique woodland landscapes of the South West Slopes – some direct-seeded restoration on an S2S private land conservation are looking across to TableTop mountain and Benambra National Park in the Woomargama priority landscape

To find out more about how you can invest in Australia's largest conservation corridor initiative visit

www.greasternranges.org.au