



2020/21 Landholder Applicant Guidelines

A Grassy Woodland is dominated by eucalypts, typically boxes and red gums and have a relatively open canopy with sparsely distributed understorey shrubs and a conspicuous and diverse ground cover of native grasses and herbs.

The Grassy Woodlands Project aims to:

- Improve condition, extent and connectivity of Grassy Woodland patches in our region.
- Increase and protect habitat for Grey-crowned babbblers and other significant woodland birds.

The project supports landholders to protect and enhance remnant native vegetation or to revegetate new areas on their properties. Other activities that can be funded are enhancing old shelterbelts by understory planting and in the Upper Murray area, grassy woodlands impacted by fire will be prioritised.



Grey-crowned babbblers. Photo credit: David Smith, ANU

Applicant Round Closes: **19 October 2020**

For further information, contact:

- Judy Kirk, **Corowa District Landcare**,
E: corowalandcare@bigpond.com or P: 0417 858 533
- Kathie Le Busque, **West Hume Landcare**
E: Kathie@petaurus.net.au or P: 0408 443 261
- Kylie Durant, **Holbrook Landcare Network**
E: kyledurant@holbrooklandcare.org.au or
P: 0418 198 522

Funding arrangements

Project provides:

- Wildlife friendly fencing materials, including gate/s (see next page for more information).
- Plants (including stakes, guards and planting) or direct seeding.

Landholder provides:

- Fencing labour
- Site preparation which may include weed and pest animal control, and ripping.
- Ongoing site management (weed and pest control).

[CLICK HERE:](#)

to submit your EOI.
If you'd like a form sent to you,
please let us know.

Eligibility

Project site should be within the LGA's of Federation, Greater Hume and Snowy Valley Councils area and:

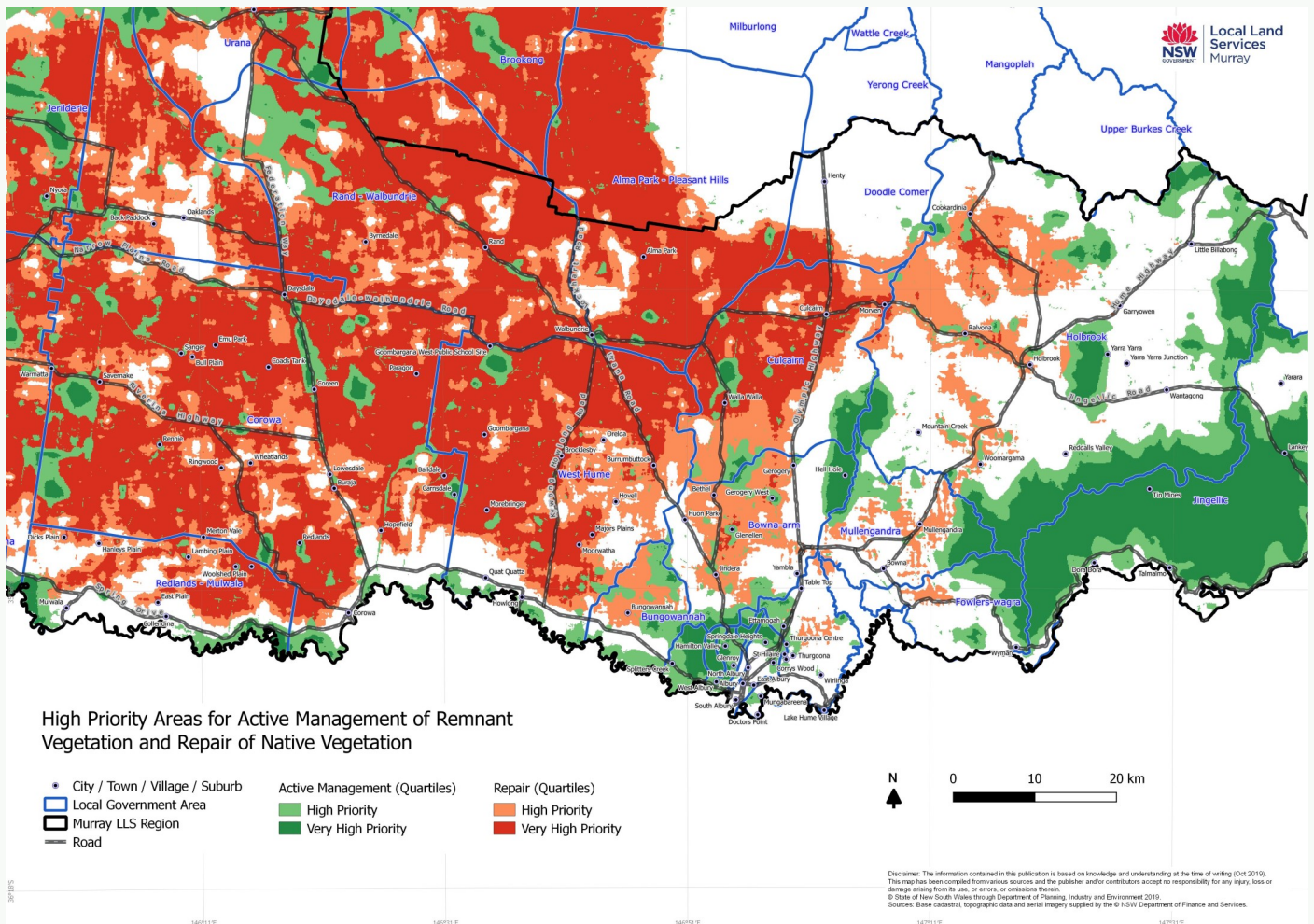
- within 1km of the high or very high priority areas for 'active management' and 'repair' as shown on map below
- minimum of 1ha
- at least 20m wide and if linear, connected to existing vegetation

Conditions

Landholder must be willing to:

- enter into a 10 year Landholder Management Agreement
- erect wildlife friendly fences to Australian Standards:
 - managed in stock-proof condition
 - min. of 6 lines high tensile wire or a combination of plain wire and hinged joint
 - max. post spacing 5m apart
 - include one permanent gate

Full conditions will be negotiated with eligible landholders.



A partnership between Landcare groups and Murray Local Land Services, funded by Catchment Action NSW.

